

**RWE Renewables UK Dogger Bank  
South (West) Limited**

**RWE Renewables UK Dogger Bank  
South (East) Limited**

# **Dogger Bank South Offshore Wind Farms**

**Offshore Order Limits and Grid Co-ordinates Plan  
Volume 2**

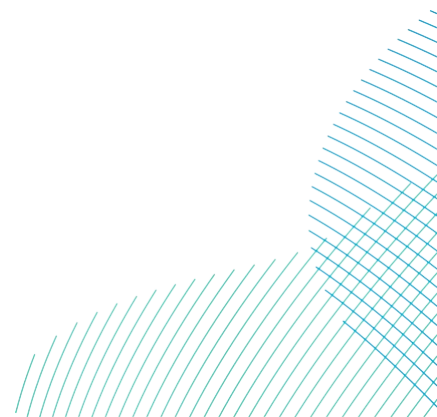
**June 2024**

**Application Reference: 2.3**

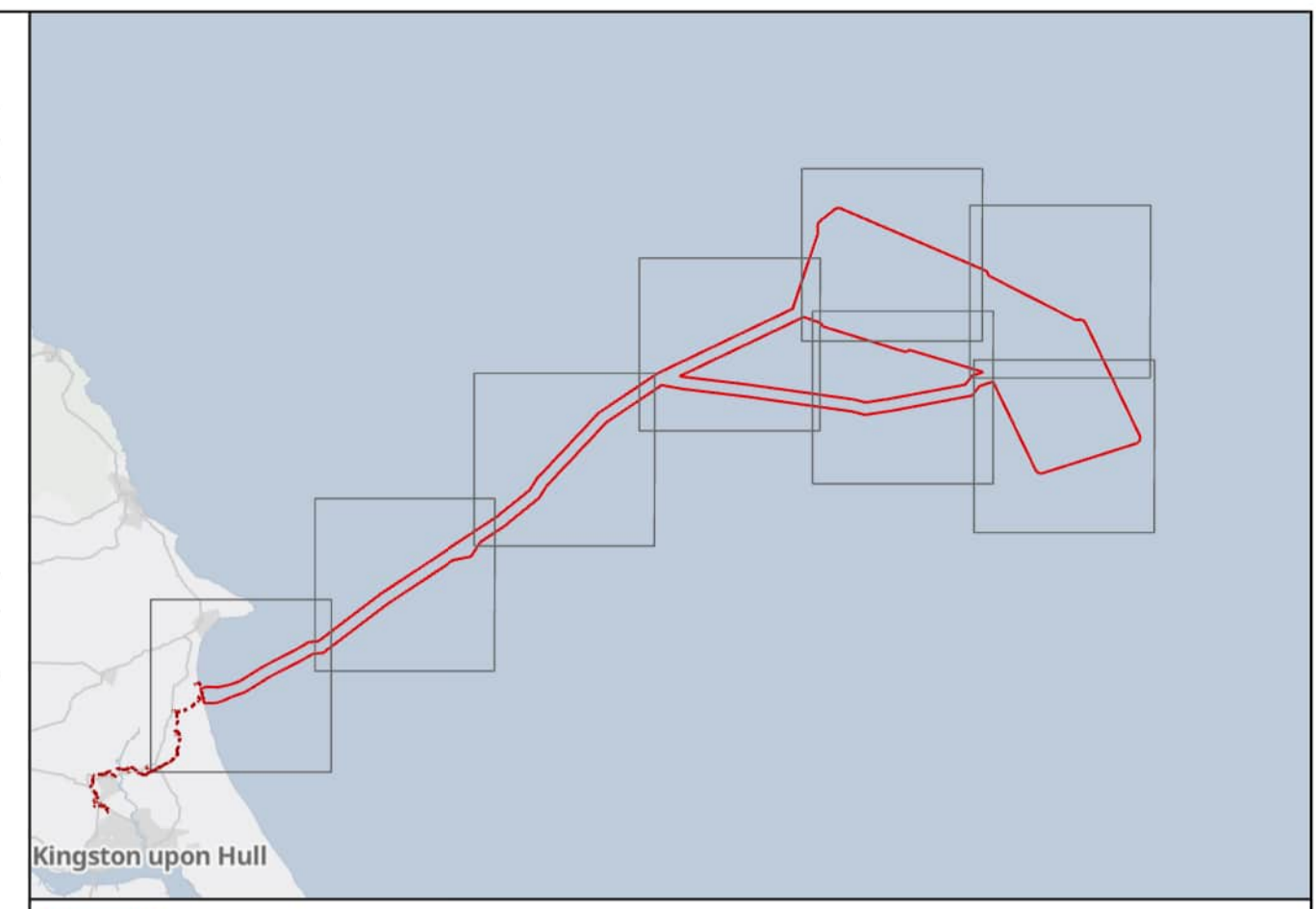
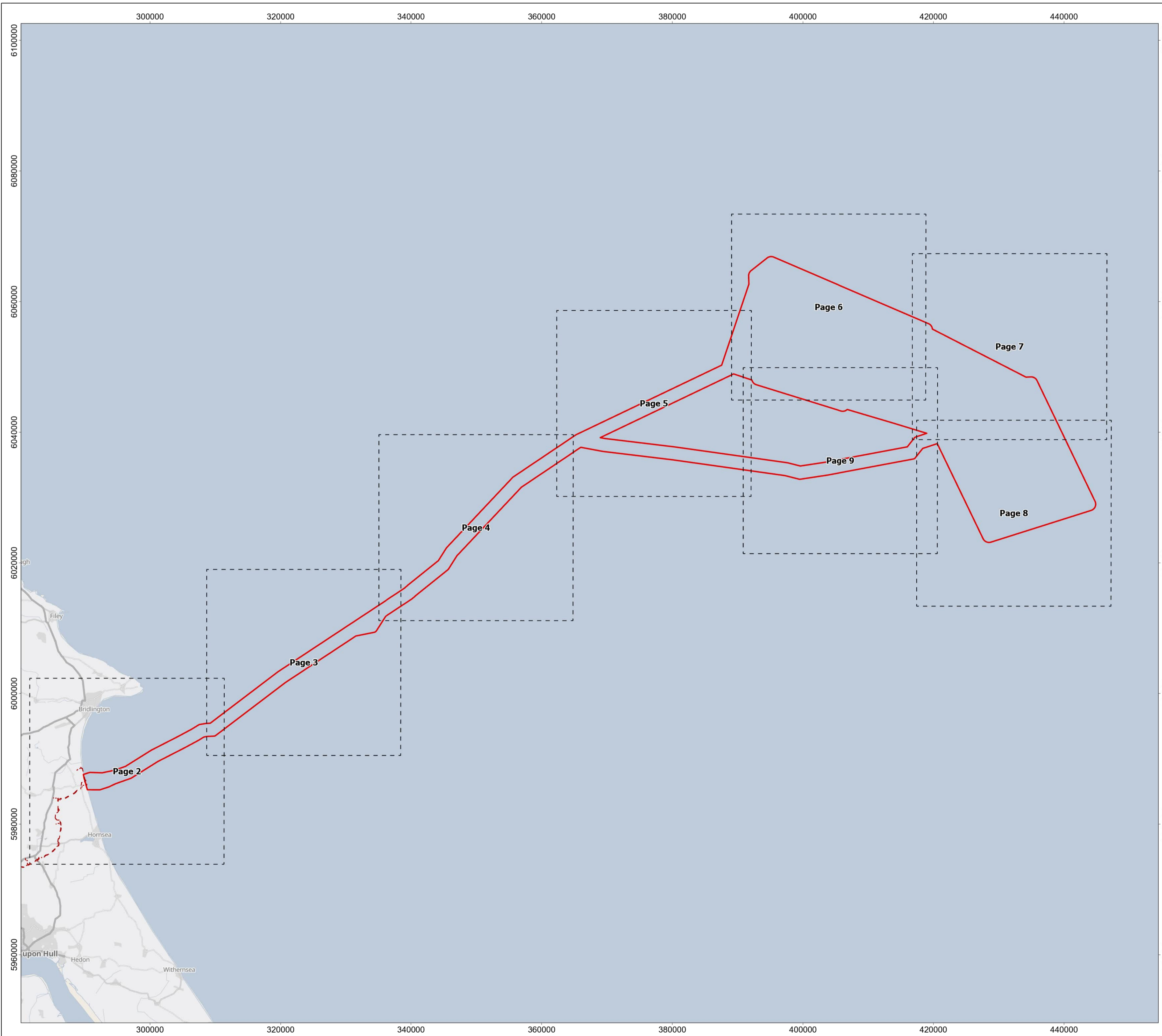
**APFP Regulation: 5(2)(j)(ii)**

**Revision: 01**

Company:	<b>RWE Renewables UK Dogger Bank South (West) Limited and RWE Renewables UK Dogger Bank South (East) Limited</b>	Asset:	<b>Development</b>		
Project:	<b>Dogger Bank South Offshore Wind Farms</b>	Sub Project/Package:	<b>Consents</b>		
Document Title or Description:	Offshore Order Limits and Grid Co-ordinates Plan				
Document Number:	005028744-01	Contractor Reference Number:	PC2340-RHD-OF-ZZ-DR-Z-0539		
<p><i>COPYRIGHT © RWE Renewables UK Dogger Bank South (West) Limited and RWE Renewables UK Dogger Bank South (East) Limited, 2024. All rights reserved.</i></p> <p><i>This document is supplied on and subject to the terms and conditions of the Contractual Agreement relating to this work, under which this document has been supplied, in particular:</i></p> <p><b>LIABILITY</b></p> <p><i>In preparation of this document RWE Renewables UK Dogger Bank South (West) Limited and RWE Renewables UK Dogger Bank South (East) Limited has made reasonable efforts to ensure that the content is accurate, up to date and complete for the purpose for which it was contracted. RWE Renewables UK Dogger Bank South (West) Limited and RWE Renewables UK Dogger Bank South (East) Limited makes no warranty as to the accuracy or completeness of material supplied by the client or their agent.</i></p> <p><i>Other than any liability on RWE Renewables UK Dogger Bank South (West) Limited and RWE Renewables UK Dogger Bank South (East) Limited detailed in the contracts between the parties for this work RWE Renewables UK Dogger Bank South (West) Limited and RWE Renewables UK Dogger Bank South (East) Limited shall have no liability for any loss, damage, injury, claim, expense, cost or other consequence arising as a result of use or reliance upon any information contained in or omitted from this document.</i></p> <p><i>Any persons intending to use this document should satisfy themselves as to its applicability for their intended purpose.</i></p> <p><i>The user of this document has the obligation to employ safe working practices for any activities referred to and to adopt specific practices appropriate to local conditions.</i></p>					
<b>Rev No.</b>	<b>Date</b>	<b>Status/Reason for Issue</b>	<b>Author</b>	<b>Checked by</b>	<b>Approved by</b>
01	June 2024	Final for DCO Application	RHDHV	RWE	RWE







- Offshore Order Limits
- Onshore Order Limits
- Sheet Boundary

*Due to the complexity of the boundary shapes, only key coordinates are shown on this plan and displayed in the corresponding tables. Do not recreate any boundaries based on coordinates in the tables. If detail boundaries are required, please contact RWE Renewables*

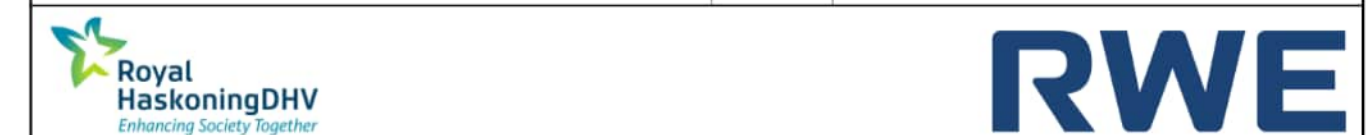
MAP NOTES / DATA SOURCES:  
 Contains OS data © Crown Copyright and database right 2023  
 Contains data from OS Zoomstack  
 Not to be used for Navigation.

PROJECT TITLE  
**Dogger Bank South Offshore Wind Farms**

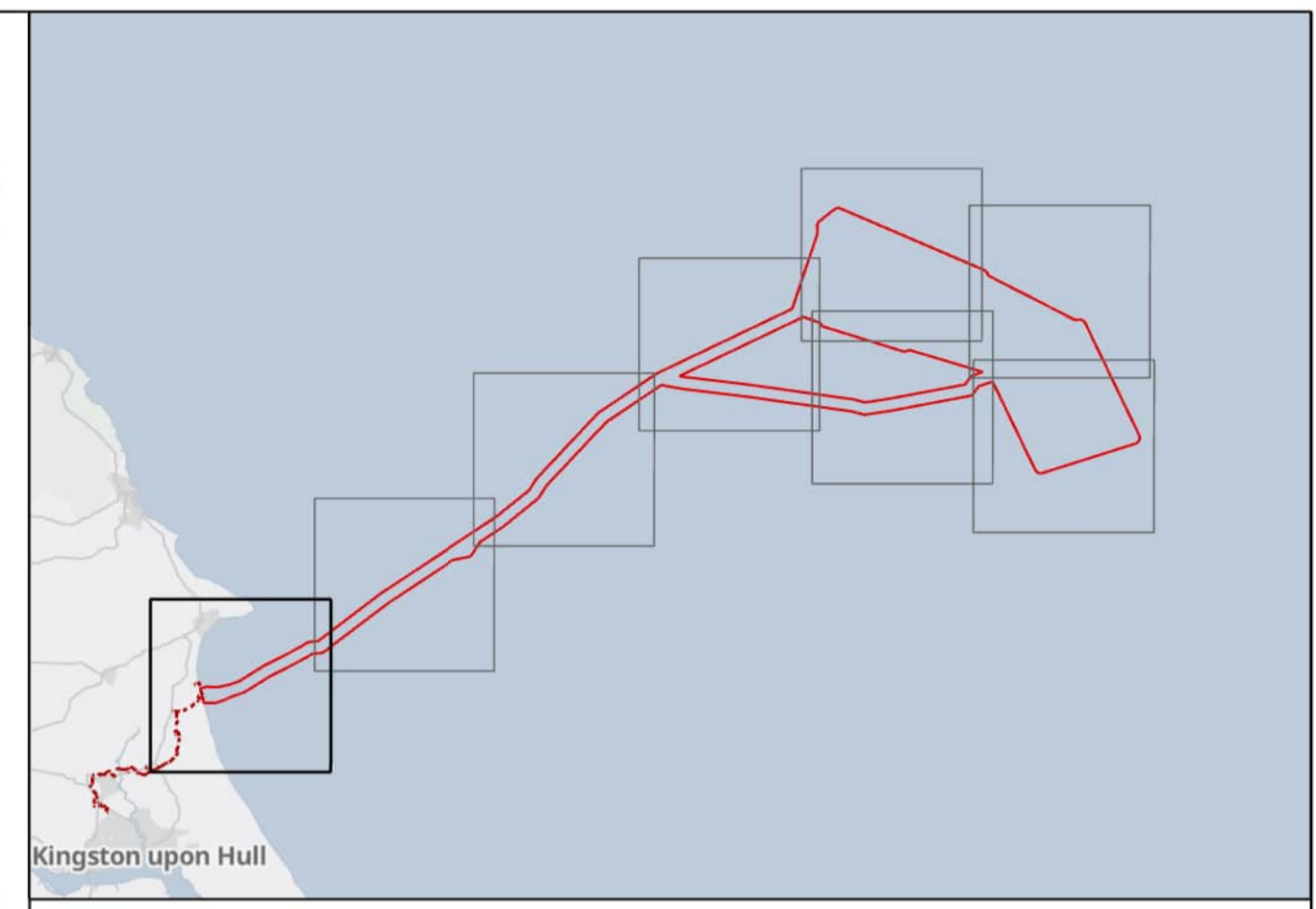
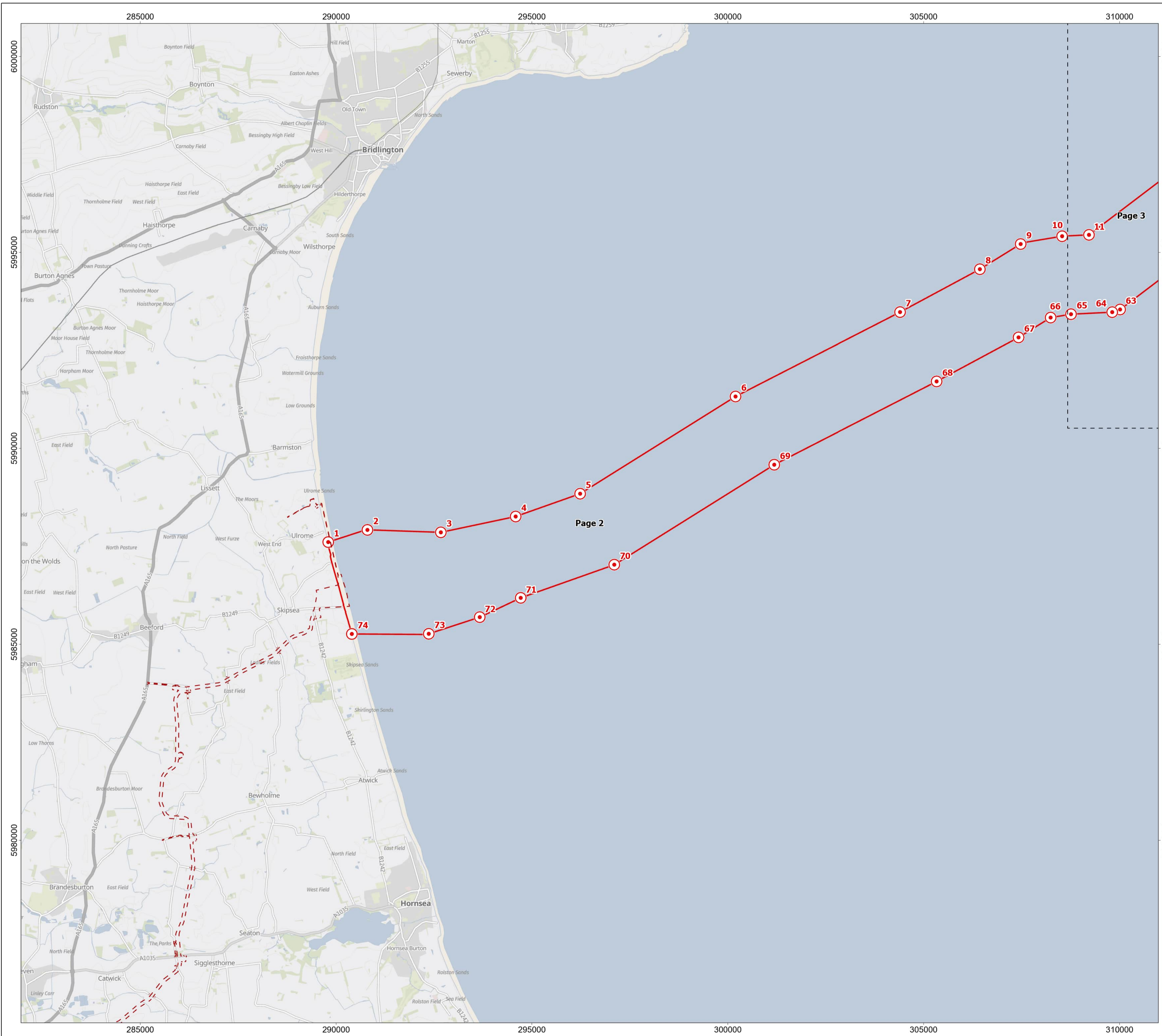
DRAWING TITLE  
**Offshore Order Limits & Grid Co-ordinates**

DRAWING NUMBER: **PC2340-RHD-OF-ZZ-DR-Z-0539** PAGE NUMBER: **Page 1 of 10**

VER	DATE	REMARKS	DRAW	CHEK	APRD
0.1	19/10/2023	First Issue	SB	CC	RF
0.2	28/11/2023	Second Issue	SB	CC	RF
0.3	04/01/2023	Third Issue	SB	CC	RF







- Offshore Order Limits
- Onshore Order Limits
- Offshore Order Limits Node Point
- Sheet Boundary

*Due to the complexity of the boundary shapes, only key coordinates are shown on this plan and displayed in the corresponding tables. Do not recreate any boundaries based on coordinates in the tables. If detail boundaries are required, please contact RWE Renewables*

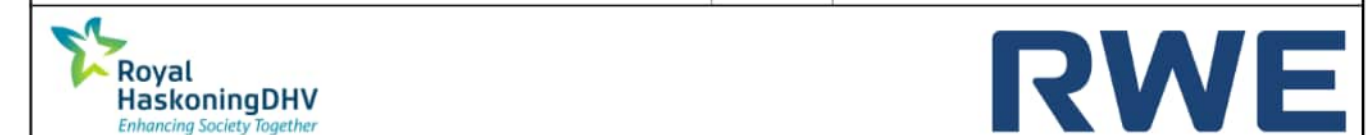
**MAP NOTES / DATA SOURCES:**  
 Contains OS data © Crown Copyright and database right 2023  
 Contains data from OS Zoomstack  
 Not to be used for Navigation.

**PROJECT TITLE**  
**Dogger Bank South Offshore Wind Farms**

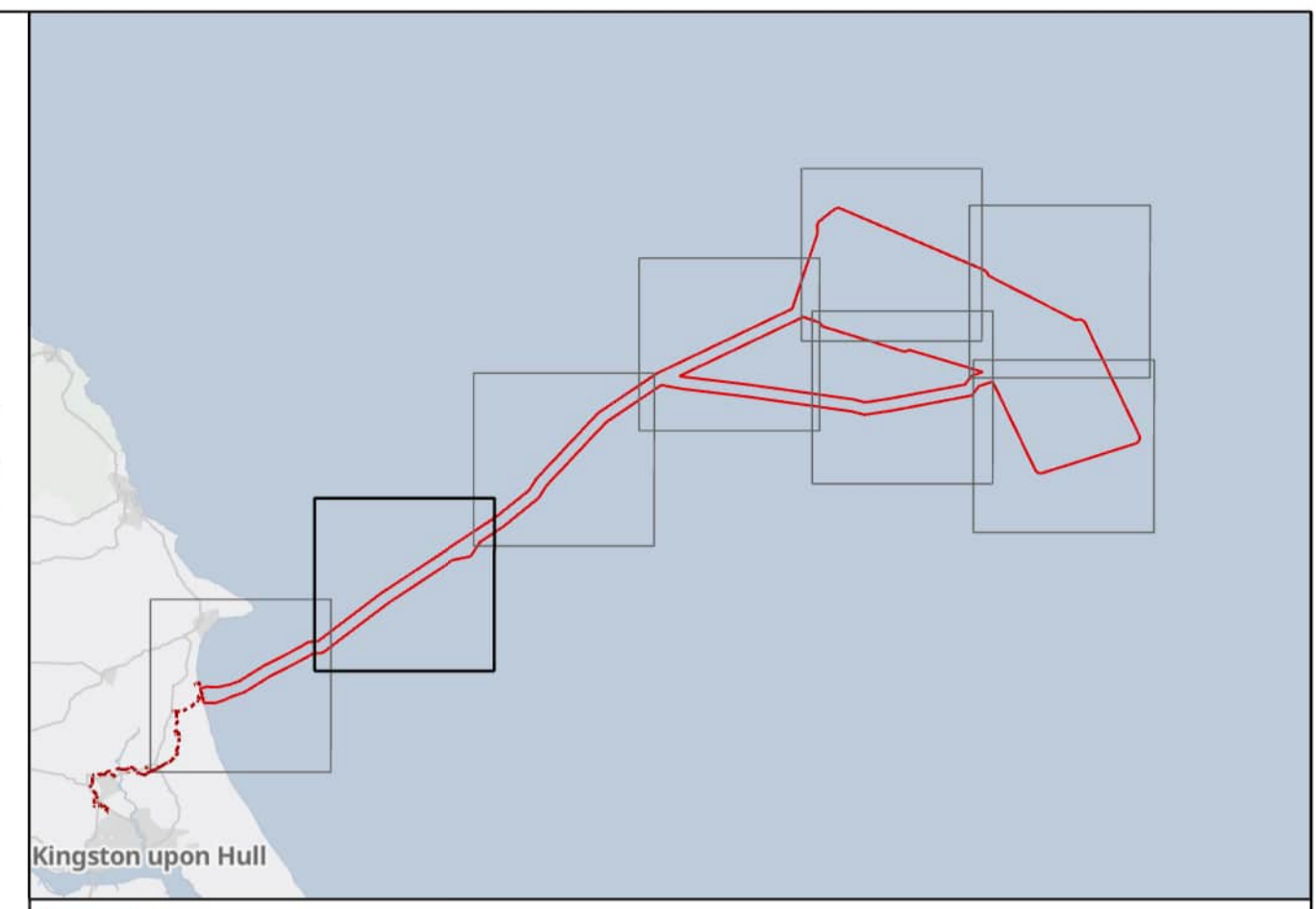
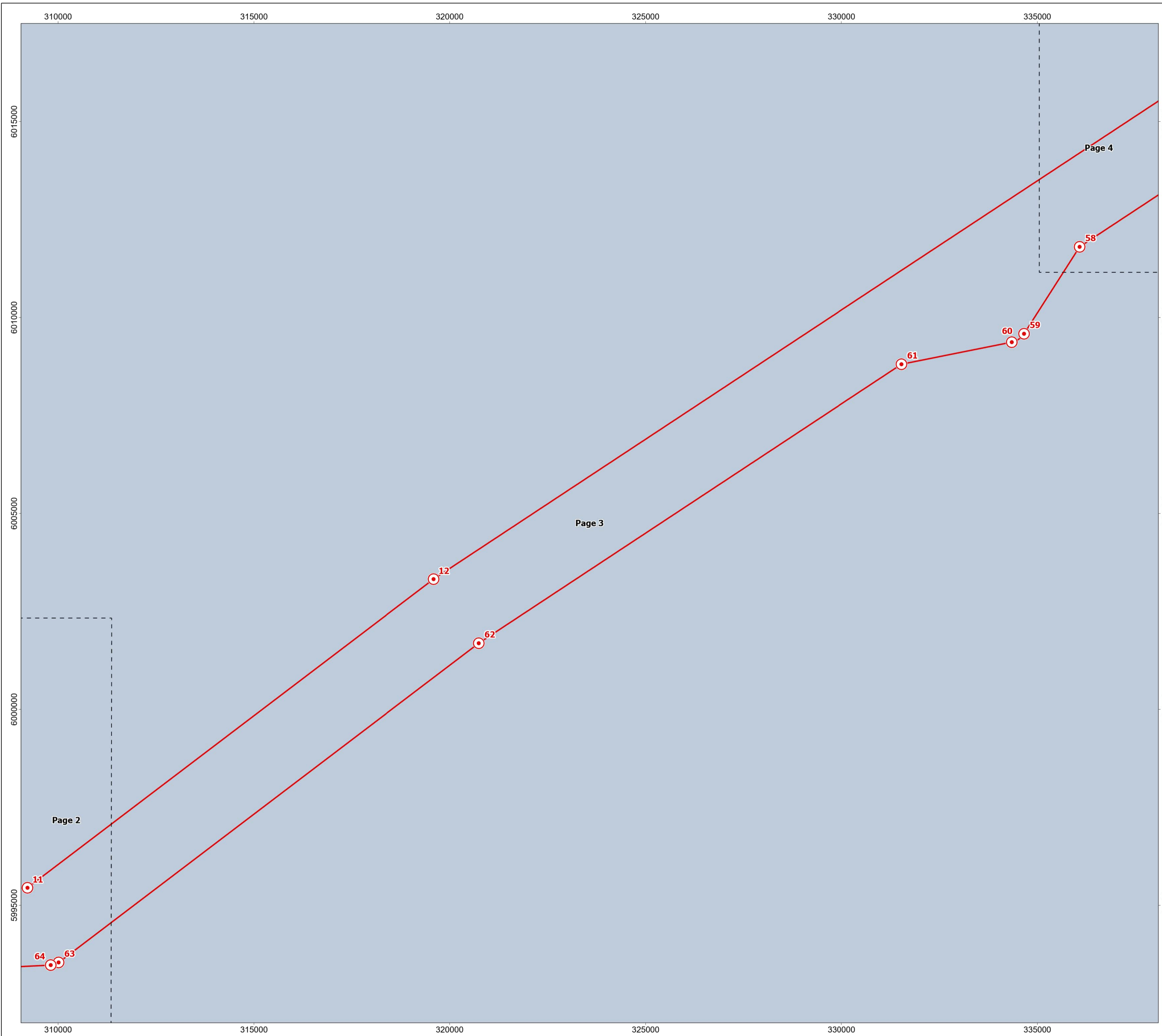
**DRAWING TITLE**  
**Offshore Order Limits & Grid Co-ordinates**

**DRAWING NUMBER:** PC2340-RHD-OF-ZZ-DR-Z-0539 **PAGE NUMBER:** Page 2 of 10

VER	DATE	REMARKS	DRAW	CHEK	APRD
0.1	19/10/2023	First Issue	SB	CC	RF
0.2	28/11/2023	Second Issue	SB	CC	RF
0.3	04/01/2023	Third Issue	SB	CC	RF







- Offshore Order Limits
- ⊙ Offshore Order Limits Node Point
- Sheet Boundary

*Due to the complexity of the boundary shapes, only key coordinates are shown on this plan and displayed in the corresponding tables. Do not recreate any boundaries based on coordinates in the tables. If detail boundaries are required, please contact RWE Renewables*

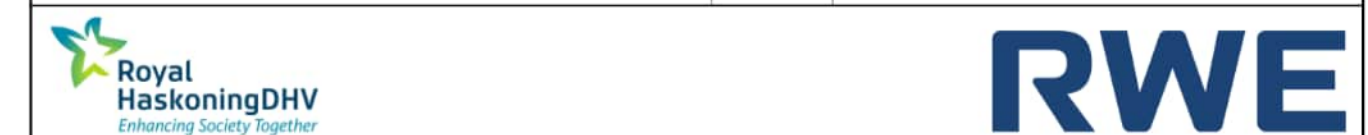
MAP NOTES / DATA SOURCES:  
 Contains OS data © Crown Copyright and database right 2023  
 Contains data from OS Zoomstack  
 Not to be used for Navigation.

PROJECT TITLE  
**Dogger Bank South Offshore Wind Farms**

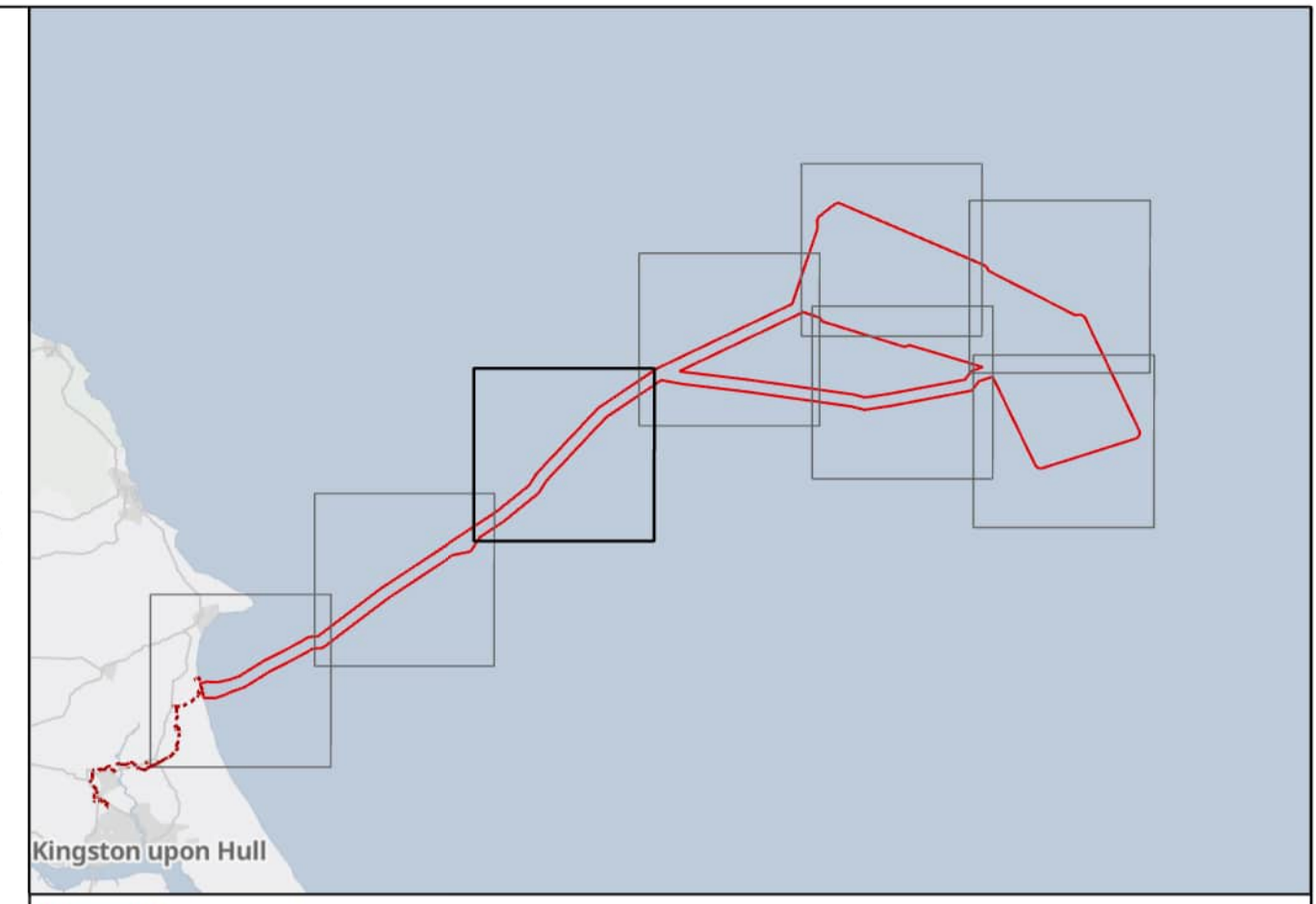
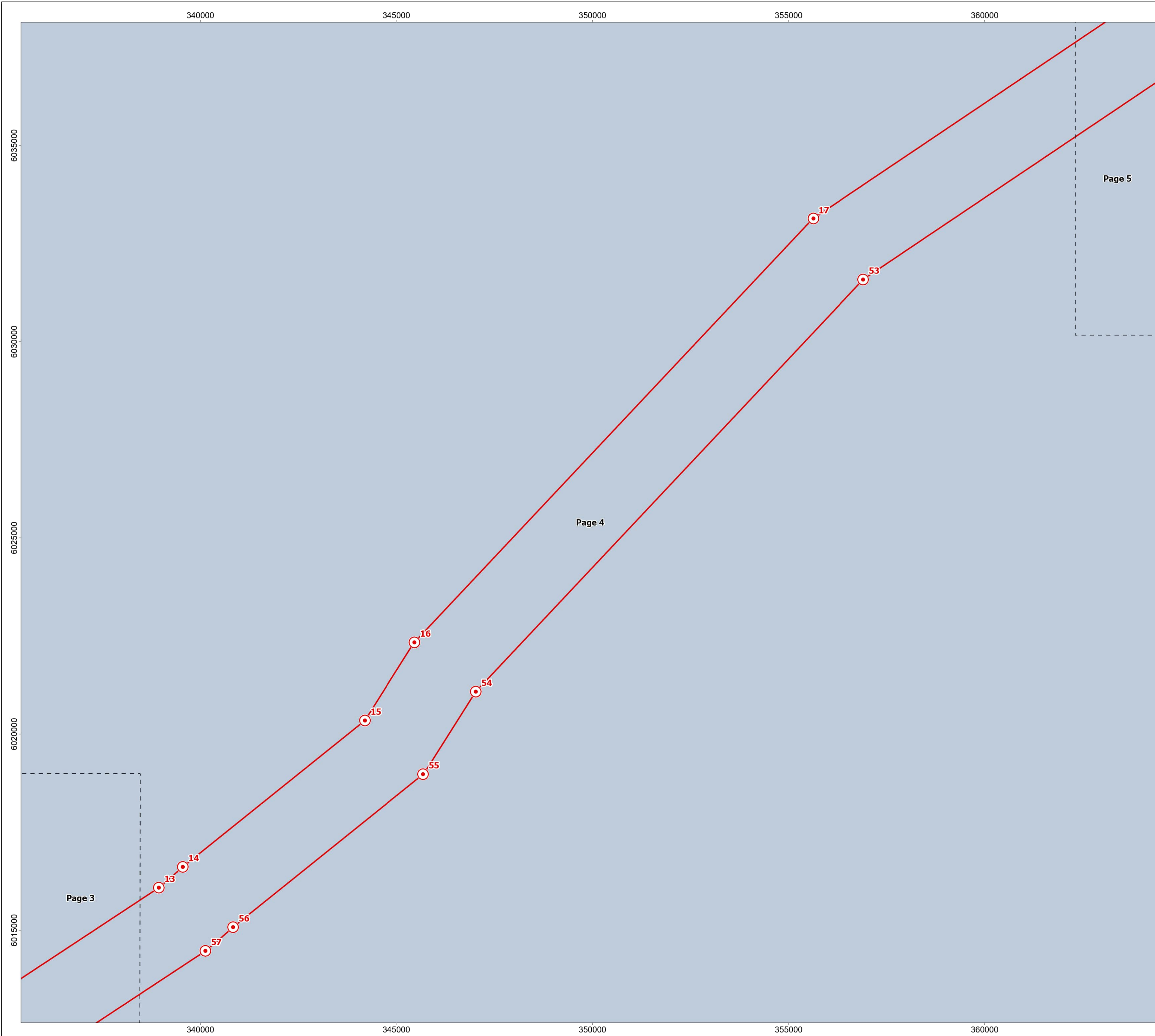
DRAWING TITLE  
**Offshore Order Limits & Grid Co-ordinates**

DRAWING NUMBER: **PC2340-RHD-OF-ZZ-DR-Z-0539**      PAGE NUMBER: **Page 3 of 10**

VER	DATE	REMARKS	DRAW	CHEK	APRD
0.1	19/10/2023	First Issue	SB	CC	RF
0.2	28/11/2023	Second Issue	SB	CC	RF
0.3	04/01/2023	Third Issue	SB	CC	RF







- Offshore Order Limits
- ⊙ Offshore Order Limits Node Point
- Sheet Boundary

*Due to the complexity of the boundary shapes, only key coordinates are shown on this plan and displayed in the corresponding tables. Do not recreate any boundaries based on coordinates in the tables. If detail boundaries are required, please contact RWE Renewables*

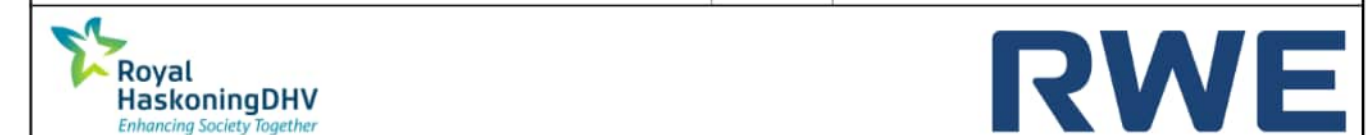
MAP NOTES / DATA SOURCES:  
 Contains OS data © Crown Copyright and database right 2023  
 Contains data from OS Zoomstack  
 Not to be used for Navigation.

PROJECT TITLE  
**Dogger Bank South Offshore Wind Farms**

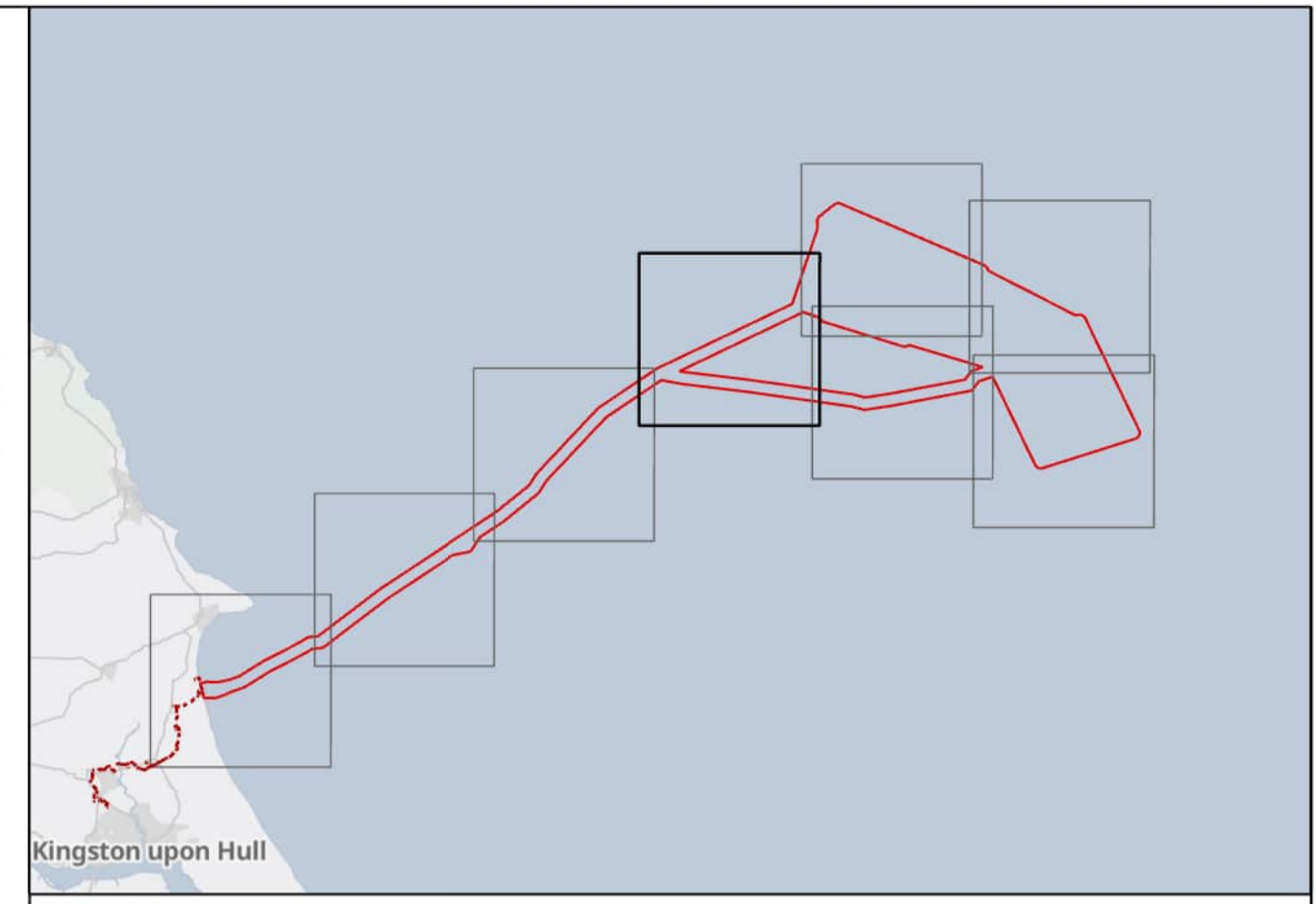
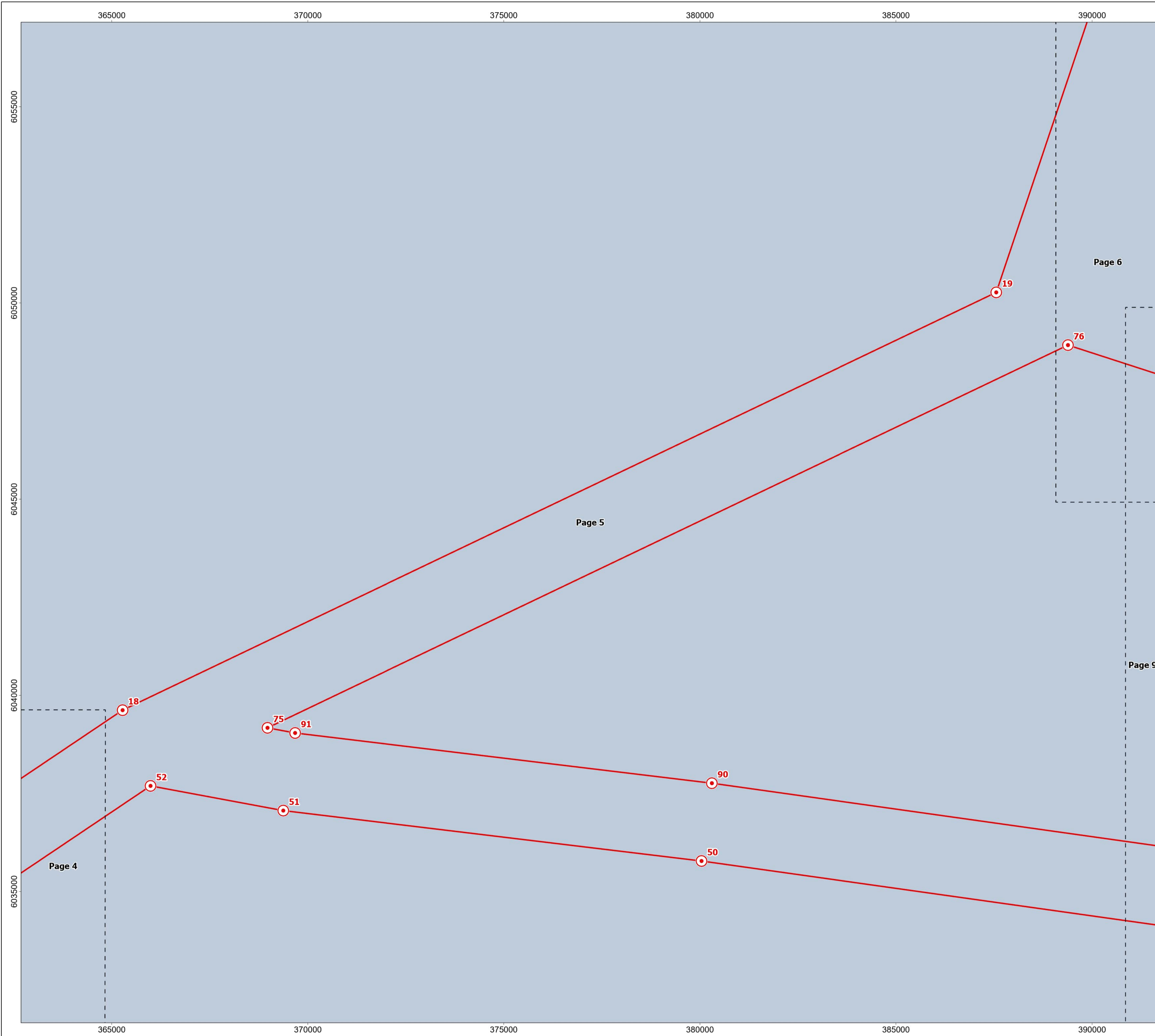
DRAWING TITLE  
**Offshore Order Limits & Grid Co-ordinates**

DRAWING NUMBER: **PC2340-RHD-OF-ZZ-DR-Z-0539**      PAGE NUMBER: **Page 4 of 10**

VER	DATE	REMARKS	DRAW	CHEK	APRD
0.1	19/10/2023	First Issue	SB	CC	RF
0.2	28/11/2023	Second Issue	SB	CC	RF
0.3	04/01/2023	Third Issue	SB	CC	RF







- Offshore Order Limits
- Offshore Order Limits Node Point
- Sheet Boundary

*Due to the complexity of the boundary shapes, only key coordinates are shown on this plan and displayed in the corresponding tables. Do not recreate any boundaries based on coordinates in the tables. If detail boundaries are required, please contact RWE Renewables*

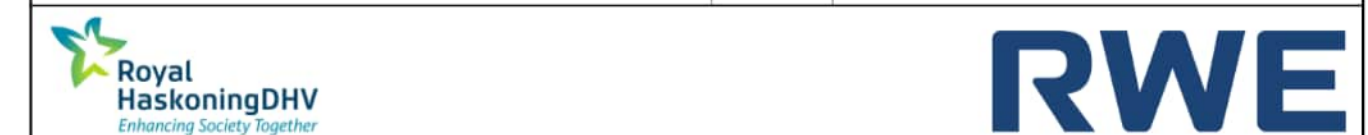
MAP NOTES / DATA SOURCES:  
 Contains OS data © Crown Copyright and database right 2023  
 Contains data from OS Zoomstack  
 Not to be used for Navigation.

PROJECT TITLE  
**Dogger Bank South Offshore Wind Farms**

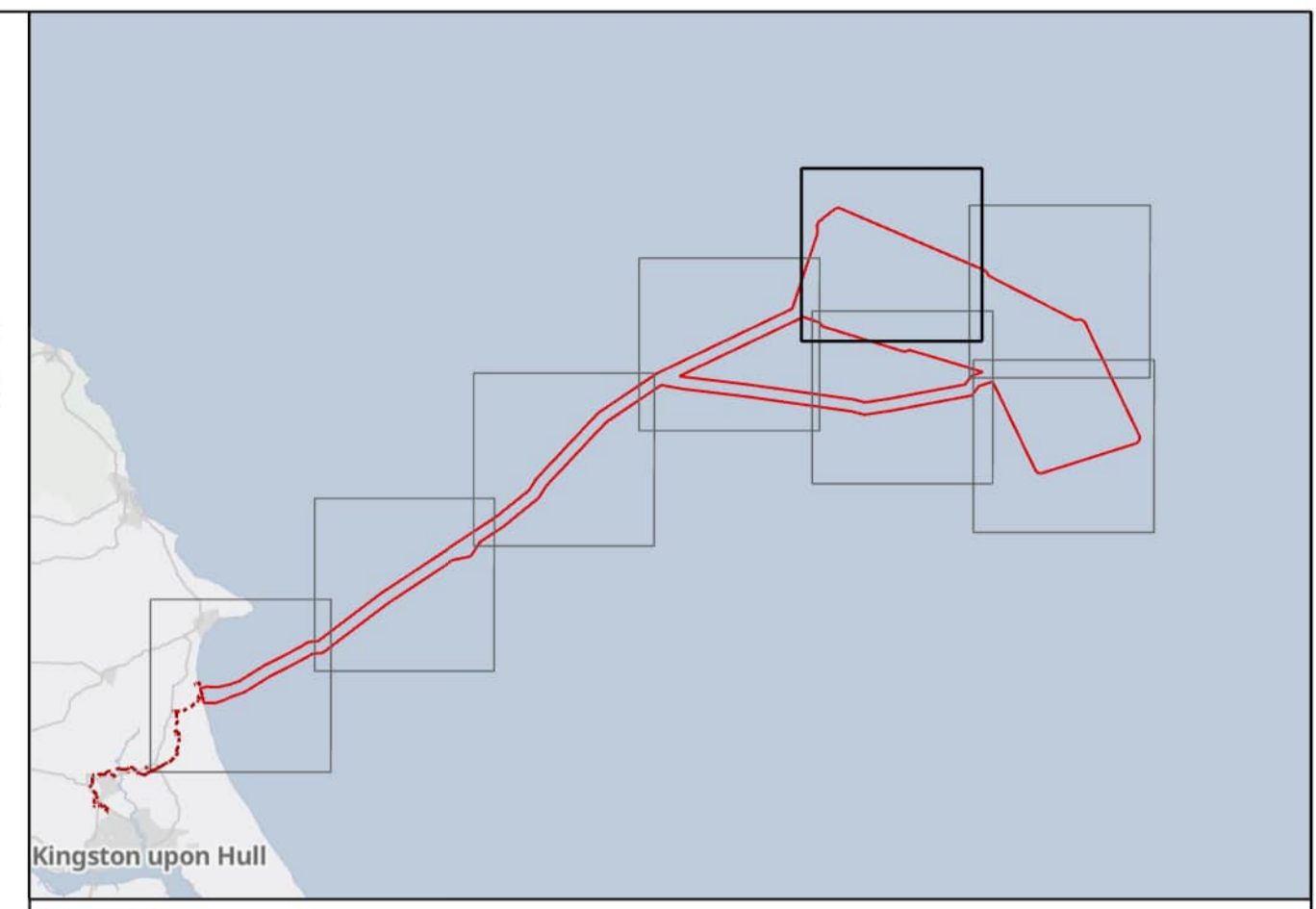
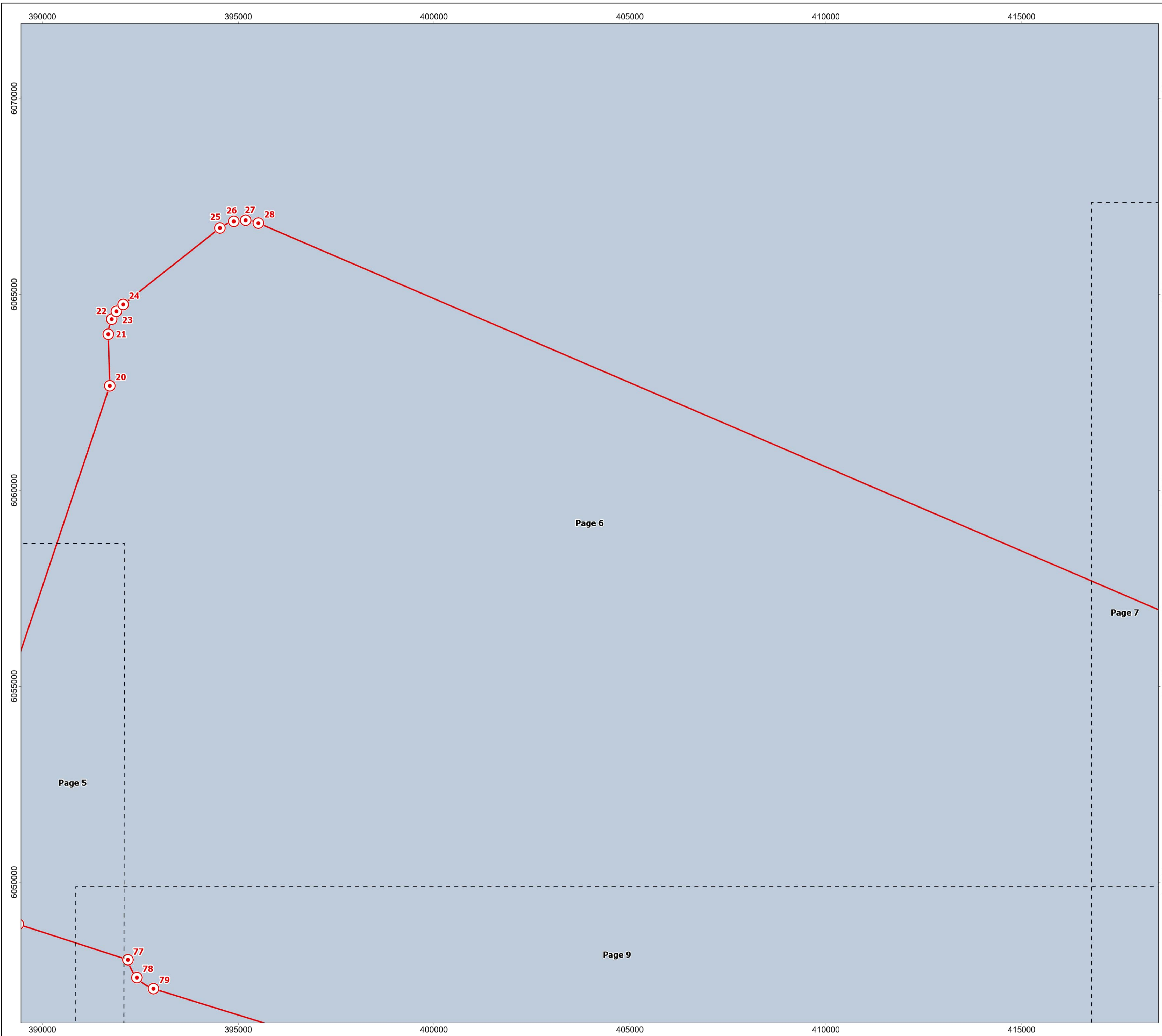
DRAWING TITLE  
**Offshore Order Limits & Grid Co-ordinates**

DRAWING NUMBER: **PC2340-RHD-OF-ZZ-DR-Z-0539**      PAGE NUMBER: **Page 5 of 10**

VER	DATE	REMARKS	DRAW	CHEK	APRD
0.1	19/10/2023	First Issue	SB	CC	RF
0.2	28/11/2023	Second Issue	SB	CC	RF
0.3	04/01/2023	Third Issue	SB	CC	RF







- Offshore Order Limits
- Offshore Order Limits Node Point
- Sheet Boundary

*Due to the complexity of the boundary shapes, only key coordinates are shown on this plan and displayed in the corresponding tables. Do not recreate any boundaries based on coordinates in the tables. If detail boundaries are required, please contact RWE Renewables*

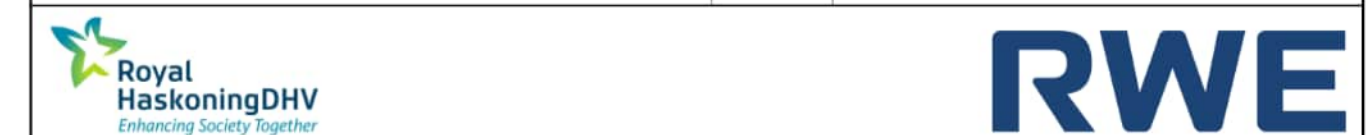
MAP NOTES / DATA SOURCES:  
 Contains OS data © Crown Copyright and database right 2023  
 Contains data from OS Zoomstack  
 Not to be used for Navigation.

PROJECT TITLE  
**Dogger Bank South Offshore Wind Farms**

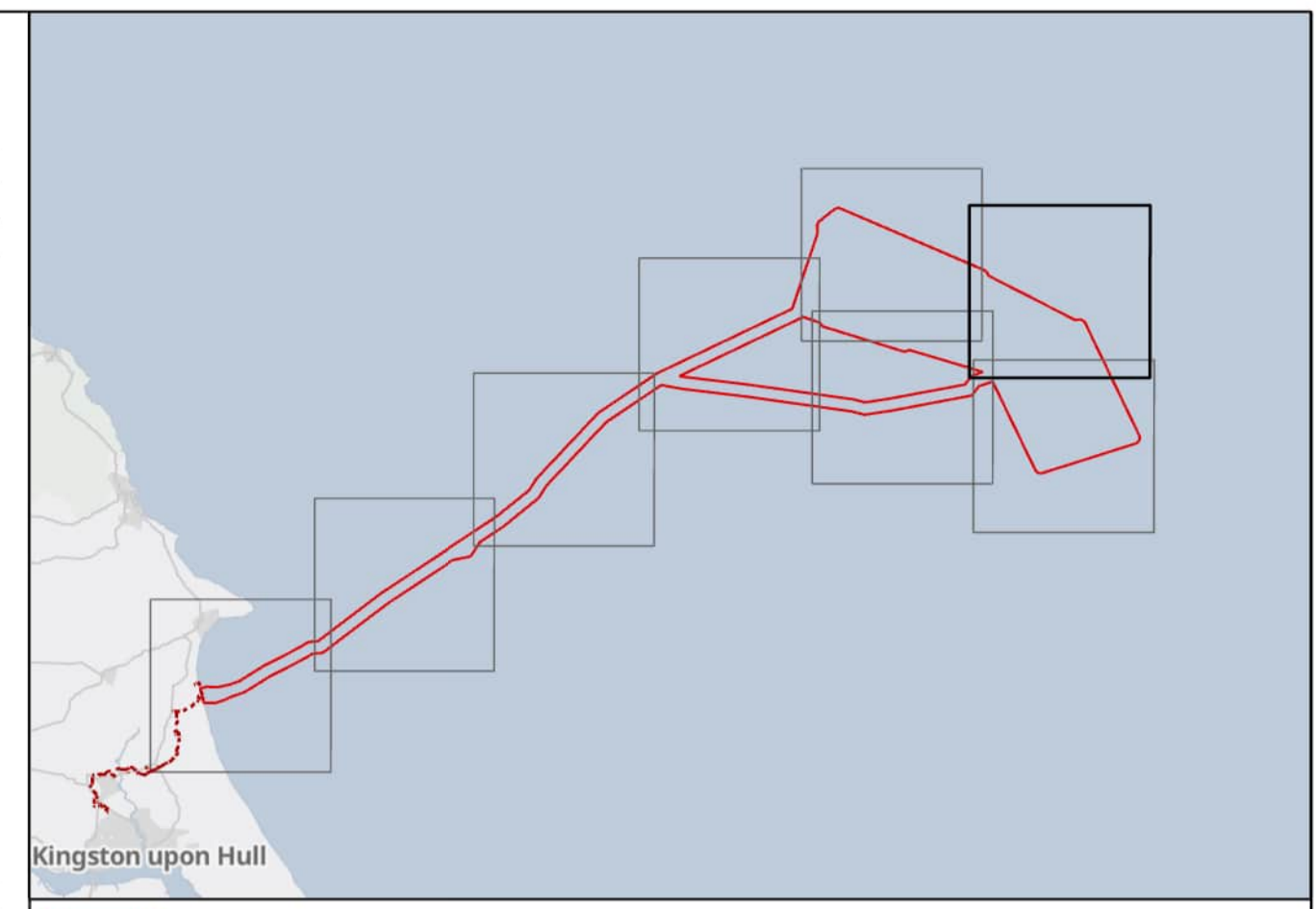
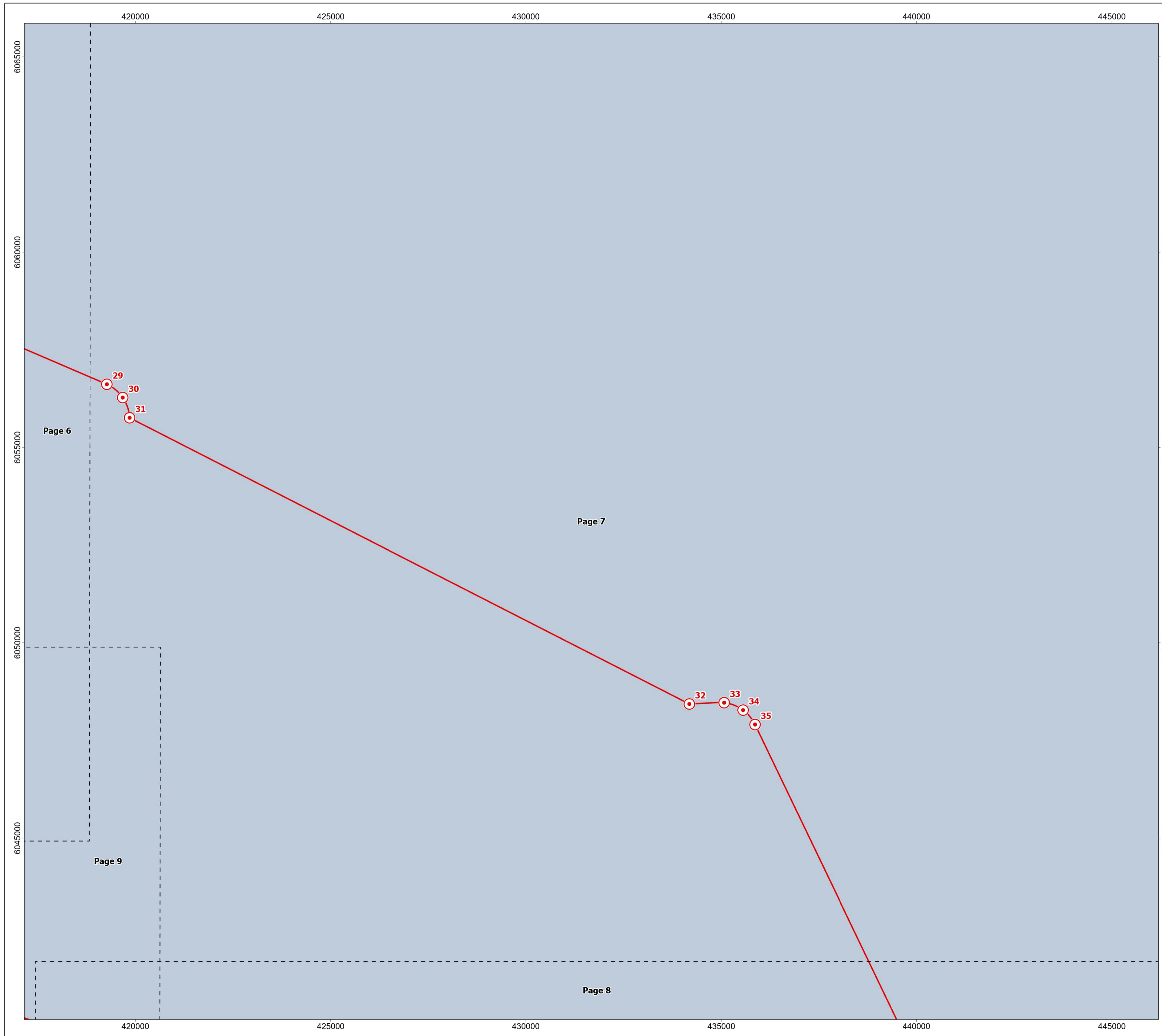
DRAWING TITLE  
**Offshore Order Limits & Grid Co-ordinates**

DRAWING NUMBER: **PC2340-RHD-OF-ZZ-DR-Z-0539**      PAGE NUMBER: **Page 6 of 10**

VER	DATE	REMARKS	DRAW	CHEK	APRD
0.1	19/10/2023	First Issue	SB	CC	RF
0.2	28/11/2023	Second Issue	SB	CC	RF
0.3	04/01/2023	Third Issue	SB	CC	RF







- Offshore Order Limits
- Offshore Order Limits Node Point
- Sheet Boundary

*Due to the complexity of the boundary shapes, only key coordinates are shown on this plan and displayed in the corresponding tables. Do not recreate any boundaries based on coordinates in the tables. If detail boundaries are required, please contact RWE Renewables*

MAP NOTES / DATA SOURCES:  
 Contains OS data © Crown Copyright and database right 2023  
 Contains data from OS Zoomstack  
 Not to be used for Navigation.

PROJECT TITLE  
**Dogger Bank South Offshore Wind Farms**

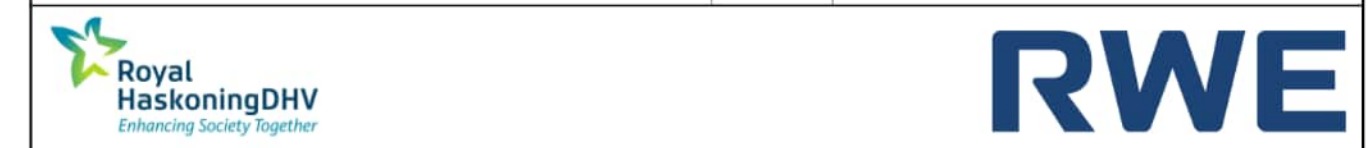
DRAWING TITLE  
**Offshore Order Limits & Grid Co-ordinates**

DRAWING NUMBER: **PC2340-RHD-OF-ZZ-DR-Z-0539**      PAGE NUMBER: **Page 7 of 10**

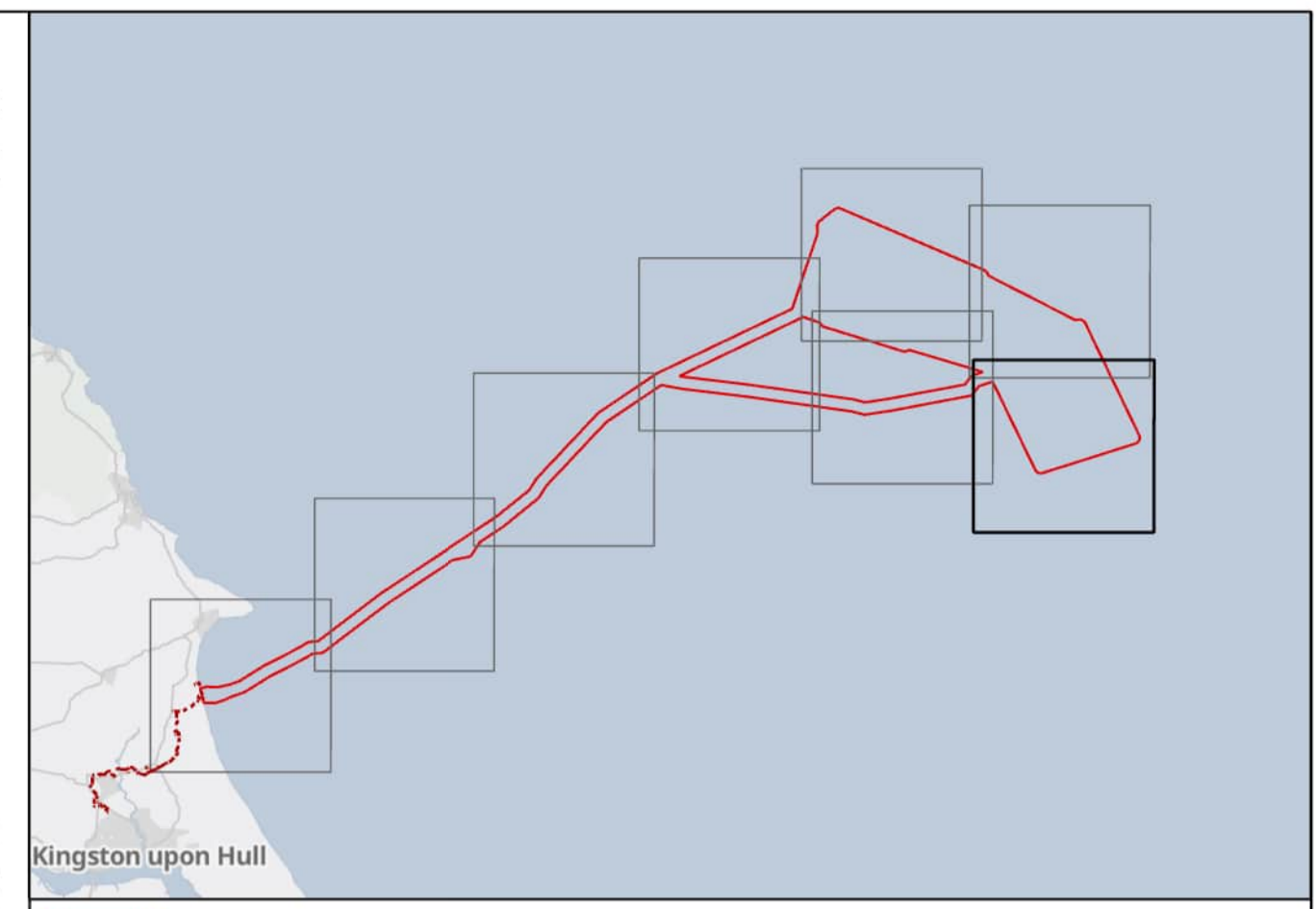
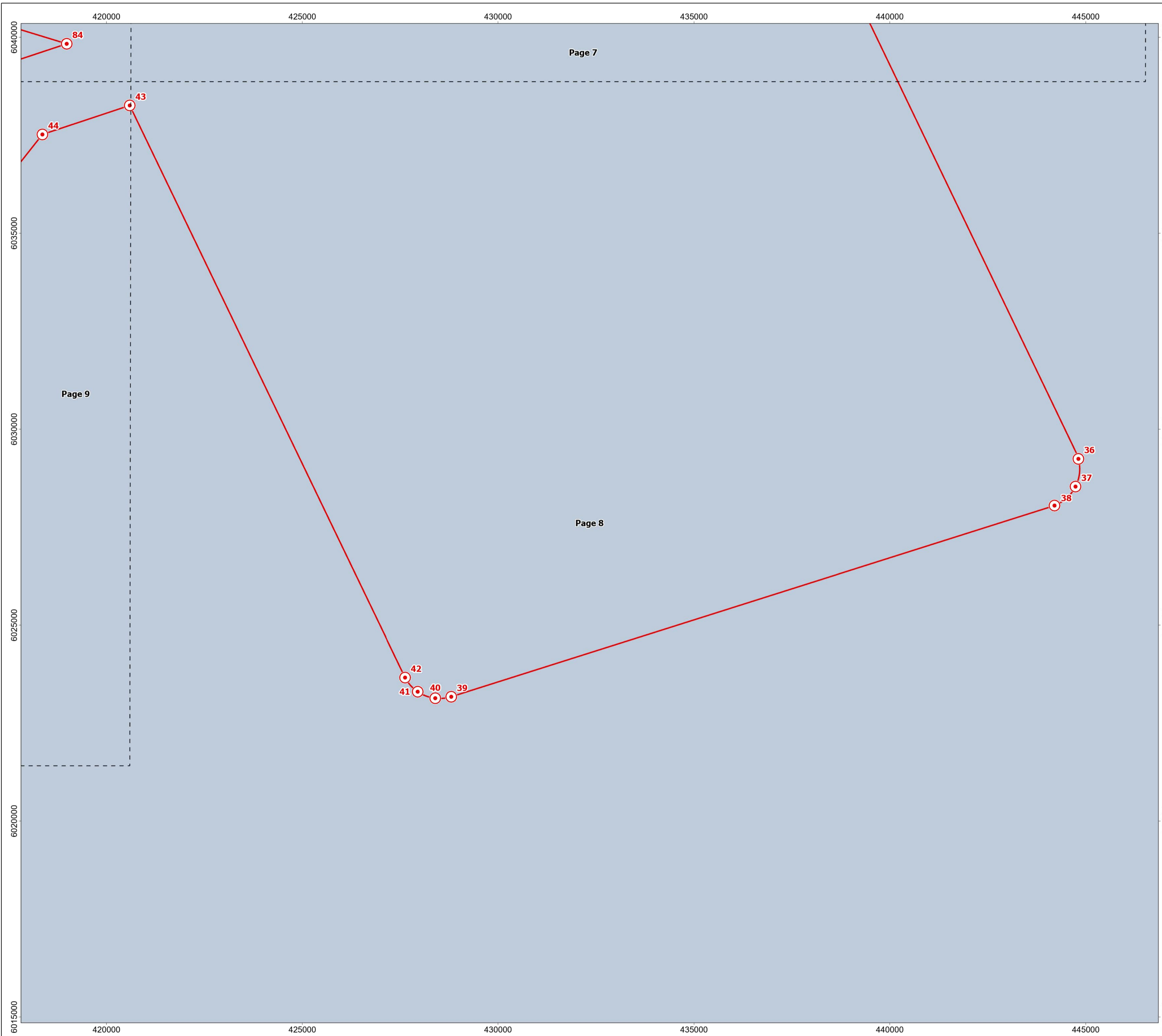
VER	DATE	REMARKS	DRAW	CHEK	APRD
0.1	19/10/2023	First Issue	SB	CC	RF
0.2	28/11/2023	Second Issue	SB	CC	RF
0.3	04/01/2023	Third Issue	SB	CC	RF

0 0.6 1.2 1.8 2.4 Km  
 0 0.3 0.6 0.9 1.2 Miles

N  
 SCALE 1:50,000      PLOT SIZE A1  
 DATUM WGS 1984      VERTICAL REF N/A  
 PRJ WGS 1984 UTM Zone 31N







- Offshore Order Limits
- ⊙ Offshore Order Limits Node Point
- Sheet Boundary

*Due to the complexity of the boundary shapes, only key coordinates are shown on this plan and displayed in the corresponding tables. Do not recreate any boundaries based on coordinates in the tables. If detail boundaries are required, please contact RWE Renewables*

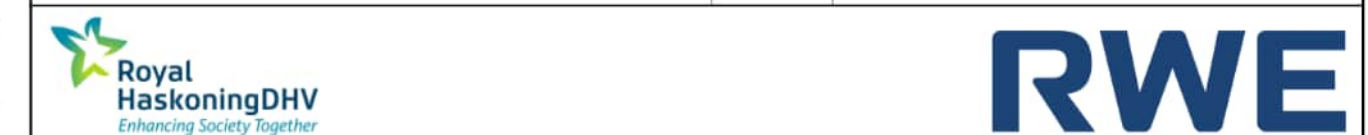
MAP NOTES / DATA SOURCES:  
 Contains OS data © Crown Copyright and database right 2023  
 Contains data from OS Zoomstack  
 Not to be used for Navigation.

PROJECT TITLE  
**Dogger Bank South Offshore Wind Farms**

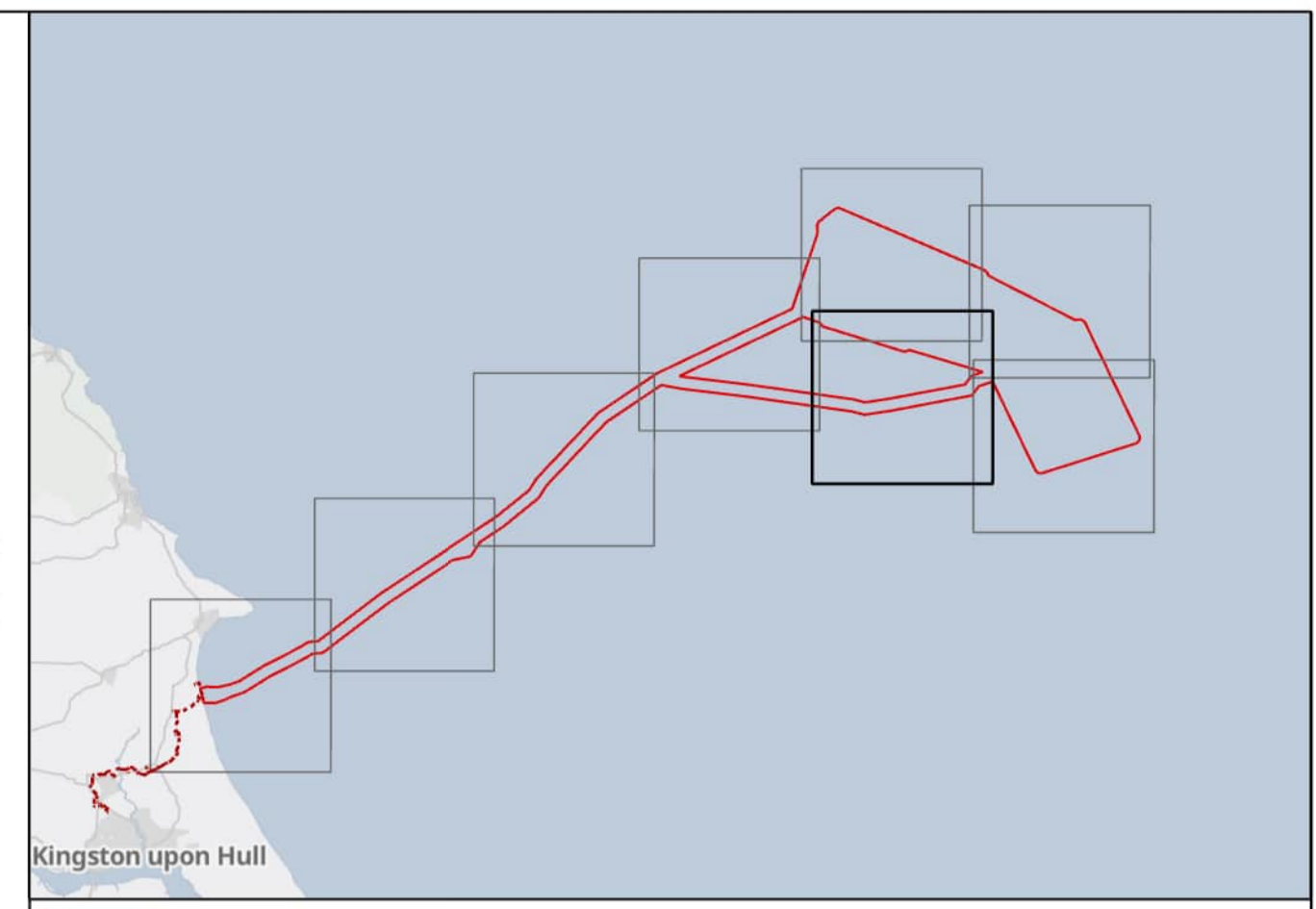
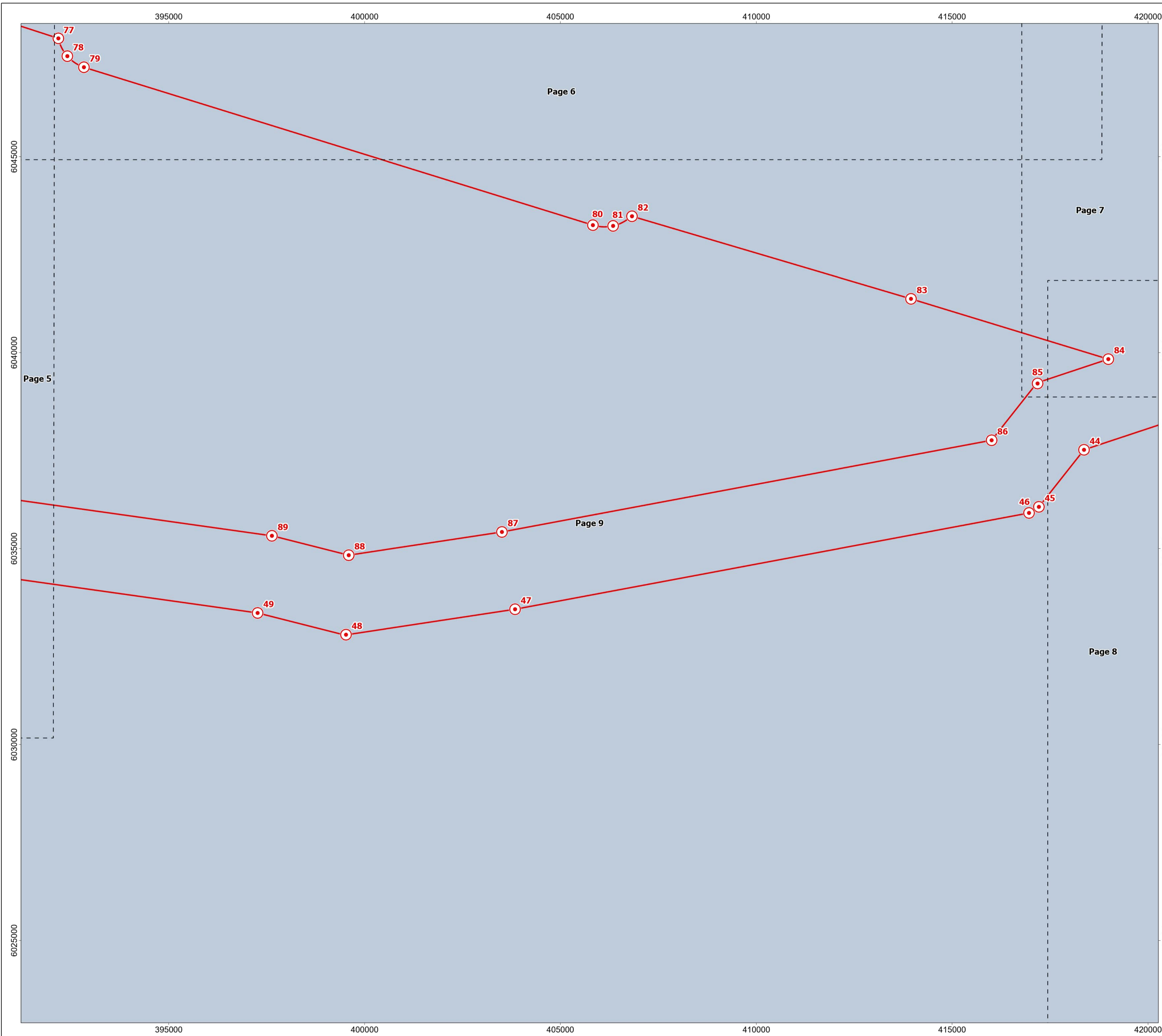
DRAWING TITLE  
**Offshore Order Limits & Grid Co-ordinates**

DRAWING NUMBER: **PC2340-RHD-OF-ZZ-DR-Z-0539**      PAGE NUMBER: **Page 8 of 10**

VER	DATE	REMARKS	DRAW	CHEK	APRD
0.1	19/10/2023	First Issue	SB	CC	RF
0.2	28/11/2023	Second Issue	SB	CC	RF
0.3	04/01/2023	Third Issue	SB	CC	RF







- Offshore Order Limits
- Offshore Order Limits Node Point
- Sheet Boundary

*Due to the complexity of the boundary shapes, only key coordinates are shown on this plan and displayed in the corresponding tables. Do not recreate any boundaries based on coordinates in the tables. If detail boundaries are required, please contact RWE Renewables*

MAP NOTES / DATA SOURCES:  
 Contains OS data © Crown Copyright and database right 2023  
 Contains data from OS Zoomstack  
 Not to be used for Navigation.

PROJECT TITLE  
**Dogger Bank South Offshore Wind Farms**

DRAWING TITLE  
**Offshore Order Limits & Grid Co-ordinates**

DRAWING NUMBER: **PC2340-RHD-OF-ZZ-DR-Z-0539** PAGE NUMBER: **Page 9 of 10**

VER	DATE	REMARKS	DRAW	CHEK	APRD
0.1	19/10/2023	First Issue	SB	CC	RF
0.2	28/11/2023	Second Issue	SB	CC	RF
0.3	04/01/2023	Third Issue	SB	CC	RF





Order limit coordinates

Node Point	WGS84 (Decimal Degrees)		WGS84 UTM Zone 31N (metres)		WGS84 (Degrees Minutes Seconds)	
	Latitude	Longitude	Easting	Northing	Latitude	Longitude
1	53.99394	-0.20681227	289798	5987608	53° 59.636' N	0° 12.409' W
2	53.99713	-0.19179191	290798	5987918	53° 59.828' N	0° 11.508' W
3	53.99734	-0.16311962	292678	5987857	53° 59.84' N	0° 9.787' W
4	54.00172	-0.13431473	294587	5988260	54° 0.103' N	0° 8.059' W
5	54.00759	-0.10964923	296231	5988842	54° 0.456' N	0° 6.579' W
6	54.03141	-0.05087694	300196	5991322	54° 1.884' N	0° 3.053' W
7	54.05235	0.01182644	304399	5993476	54° 3.141' N	0° 0.71' E
8	54.06294	0.04218206	306435	5994571	54° 3.776' N	0° 2.531' E
9	54.06909	0.05765293	307476	5995213	54° 4.146' N	0° 3.459' E
10	54.07128	0.07366842	308534	5995412	54° 4.277' N	0° 4.42' E
11	54.07185	0.08410214	309219	5995447	54° 4.311' N	0° 5.046' E
12	54.14629	0.23770977	319590	6003323	54° 8.777' N	0° 14.263' E
13	54.26731	0.52682385	338940	6016085	54° 16.039' N	0° 31.609' E
14	54.27225	0.53591256	339551	6016614	54° 16.335' N	0° 32.155' E
15	54.30719	0.60522606	344196	6020345	54° 18.431' N	0° 36.314' E
16	54.32545	0.62364238	345462	6022336	54° 19.527' N	0° 37.419' E
17	54.42544	0.77463984	355631	6033138	54° 25.526' N	0° 46.478' E
18	54.48631	0.92025722	365277	6039621	54° 29.179' N	0° 55.215' E
19	54.58739	1.25993035	387556	6050269	54° 35.243' N	1° 15.596' E
20	54.69965	1.31974681	391720	6062665	54° 41.979' N	1° 19.185' E
21	54.71147	1.31865969	391681	6063982	54° 42.688' N	1° 19.12' E
22	54.71493	1.31986534	391768	6064365	54° 42.896' N	1° 19.192' E
23	54.71676	1.32164507	391888	6064565	54° 43.005' N	1° 19.299' E
24	54.71837	1.32426709	392061	6064741	54° 43.102' N	1° 19.456' E
25	54.73642	1.36187502	394530	6066692	54° 44.185' N	1° 21.713' E
26	54.73802	1.36730942	394884	6066861	54° 44.281' N	1° 22.039' E
27	54.73834	1.37201138	395188	6066890	54° 44.3' N	1° 22.321' E
28	54.73774	1.37706959	395512	6066816	54° 44.265' N	1° 22.624' E
29	54.65048	1.74878104	419269	6056617	54° 39.029' N	1° 44.927' E
30	54.64748	1.7551707	419675	6056276	54° 38.849' N	1° 45.31' E
31	54.64286	1.75804168	419851	6055758	54° 38.572' N	1° 45.483' E
32	54.5791	1.98171067	434182	6048432	54° 34.746' N	1° 58.903' E
33	54.57951	1.99548065	435073	6048465	54° 34.771' N	1° 59.729' E
34	54.57787	2.00301767	435557	6048275	54° 34.672' N	2° 0.181' E
35	54.57459	2.00782869	435863	6047906	54° 34.475' N	2° 0.47' E
36	54.40792	2.14973324	444812	6029241	54° 24.475' N	2° 8.984' E
37	54.40156	2.14873121	444738	6028534	54° 24.094' N	2° 8.924' E
38	54.39715	2.14055983	444202	6028050	54° 23.829' N	2° 8.434' E
39	54.3514	1.90463001	428806	6023172	54° 21.084' N	1° 54.278' E
40	54.351	1.89836473	428398	6023134	54° 21.06' N	1° 53.902' E
41	54.35243	1.89144086	427951	6023300	54° 21.146' N	1° 53.486' E
42	54.35562	1.886393	427628	6023661	54° 21.337' N	1° 53.184' E
43	54.48575	1.774269	420594	6038260	54° 29.145' N	1° 46.456' E
44	54.47875	1.74007394	418365	6037519	54° 28.725' N	1° 44.404' E
45	54.46548	1.72272866	417214	6036064	54° 27.929' N	1° 43.364' E
46	54.46404	1.71888932	416962	6035908	54° 27.843' N	1° 43.133' E
47	54.43965	1.5173697	403844	6033451	54° 26.379' N	1° 31.042' E
48	54.43298	1.45100448	399524	6032802	54° 25.979' N	1° 27.06' E
49	54.43752	1.416048	397268	6033356	54° 26.251' N	1° 24.963' E
50	54.45549	1.14956897	380039	6035778	54° 27.33' N	1° 8.974' E
51	54.4644	0.98458533	369373	6037063	54° 27.864' N	0° 59.075' E
52	54.46917	0.93211451	365989	6037692	54° 28.15' N	0° 55.927' E
53	54.41183	0.79495433	356902	6031583	54° 24.71' N	0° 47.697' E
54	54.31465	0.64831586	347026	6021080	54° 18.879' N	0° 38.899' E
55	54.29535	0.62875182	345682	6018977	54° 17.721' N	0° 37.725' E
56	54.25886	0.55639474	340833	6015078	54° 15.532' N	0° 33.384' E
57	54.25322	0.5458895	340127	6014475	54° 15.193' N	0° 32.753' E
58	54.22795	0.48526245	336078	6011802	54° 13.677' N	0° 29.116' E
59	54.20757	0.46475076	334660	6009584	54° 12.454' N	0° 27.885' E
60	54.20555	0.46007758	334347	6009370	54° 12.333' N	0° 27.605' E
61	54.19957	0.41728502	331532	6008806	54° 11.974' N	0° 25.037' E
62	54.13201	0.25630864	320743	6001688	54° 7.921' N	0° 15.379' E
63	54.05505	0.09741678	310013	5993543	54° 3.303' N	0° 5.845' E
64	54.05436	0.09439173	309812	5993475	54° 3.262' N	0° 5.664' E
65	54.0535	0.07838629	308760	5993423	54° 3.21' N	0° 4.703' E
66	54.05253	0.07051053	308241	5993336	54° 3.152' N	0° 4.231' E
67	54.04769	0.05835148	307422	5992831	54° 2.862' N	0° 3.501' E
68	54.03682	0.02718621	305332	5991707	54° 2.209' N	0° 1.631' E
69	54.01616	-0.03468036	301183	5989582	54° 0.97' N	0° 2.081' W
70	53.99169	-0.09517455	297102	5987031	53° 59.501' N	0° 5.71' W
71	53.98314	-0.13094813	294716	5986184	53° 58.989' N	0° 7.857' W
72	53.97831	-0.1465338	293670	5985693	53° 58.699' N	0° 8.792' W
73	53.97398	-0.16604108	292370	5985268	53° 58.439' N	0° 9.962' W
74	53.97315	-0.19602128	290400	5985263	53° 58.389' N	0° 11.761' W
75	54.48324	0.97745215	368971	6039171	54° 28.994' N	0° 58.647' E
76	54.57572	1.28870107	389384	6048926	54° 34.543' N	1° 17.322' E
77	54.56818	1.33231168	392182	6048018	54° 34.091' N	1° 19.939' E
78	54.56414	1.33601963	392411	6047564	54° 33.849' N	1° 20.161' E
79	54.5617	1.34265919	392834	6047281	54° 33.702' N	1° 20.56' E
80	54.52808	1.54485662	405830	6043252	54° 31.685' N	1° 32.691' E
81	54.528	1.5528227	406345	6043233	54° 31.68' N	1° 33.169' E
82	54.5303	1.56017773	406827	6043479	54° 31.818' N	1° 33.611' E
83	54.51262	1.67085391	413951	6041371	54° 30.757' N	1° 40.251' E
84	54.49963	1.74901537	418985	6039833	54° 29.978' N	1° 44.941' E
85	54.49376	1.72132796	417180	6039212	54° 29.626' N	1° 43.28' E
86	54.48055	1.70364961	416008	6037763	54° 28.833' N	1° 42.219' E
87	54.45731	1.51156387	403509	6035423	54° 27.438' N	1° 30.694' E
88	54.45122	1.45139148	399594	6034830	54° 27.073' N	1° 27.083' E
89	54.45527	1.42098653	397633	6035325	54° 27.316' N	1° 25.259' E
90	54.47336	1.15283159	380303	6037760	54° 28.402' N	1° 9.17' E
91	54.48224	0.98836732	369675	6039040	54° 28.935' N	0° 59.302' E

Due to the complexity of the boundary shapes, only key coordinates are shown on this plan and displayed in the corresponding tables. Do not recreate any boundaries based on coordinates in the tables. If detail boundaries are required, please contact RWE Renewables

PROJECT TITLE

**Dogger Bank South Offshore Wind Farms**

DRAWING TITLE

**Offshore Order Limits & Grid Co-ordinates**

DRAWING NUMBER: **PC2340-RHD-OF-ZZ-DR-Z-0539**

PAGE NUMBER: **Page 10 of 10**

VER	DATE	REMARKS	DRAW	CHEK	APRD
0.1	19/10/2023	First Issue	SB	CC	RF
0.2	28/11/2023	Second Issue	SB	CC	RF
0.3	04/01/2023	Third Issue	SB	CC	RF